



MIKRON VALVE & MFG.

HIGH TEMPERTURE BALL VALVES

Mikron Valve and Manufacturer, Inc.

(a subsidiary of PSB Industries, Inc.)

1259 West 11th Street

Erie Pa, 16502

Phone 814-453-2337

Fax 814-452-6371

E-mail: joe.caccavo@psbindustries.com

<http://www.mikronvalve.com/>

HIGH TEMPERATURE BALL VALVES

Micron's high temperature series are severe service ball valves. They provide the tightest shut off for the longest period of time in very severe applications. This high temperature series is designed and built to withstand temperature fluctuations, pressure surges, and abrasion. Seat options are available as needed for our Customers applications. These valves are used in the following Industries:

POWER PLANTS

Fly Ash Service, Steam Service
The castings can service temperatures up to 1200 degrees F.

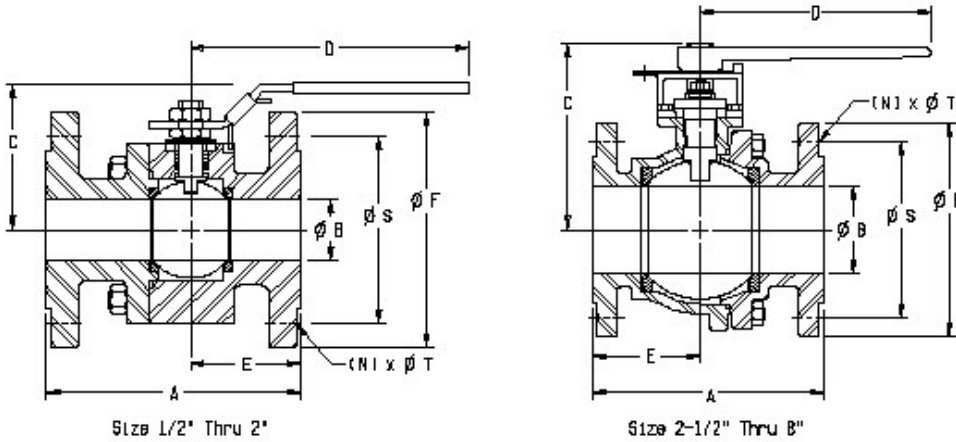
PULP & PAPER

Green Liquor, White Liquor, and Chlorine
The heavy duty body and body bolting eliminates any negative effects of piping stress.

CHEMICAL INDUSTRY

Emulsions, Acids, Caustics
The high temperature ball valve is available in many exotic materials for our Customer's application needs.

DIMENSIONS



ANSI CLASS 150# dimensions and weights

SIZE	A	B	C	D	E	F	N	S	T	Cv	WEIGHT
1/2	4.25	0.59	2.60	6.50	1.79	3.50	4	2.38	0.62	15	4 lbs
3/4	4.62	0.79	2.91	6.50	2.01	3.88	4	2.75	0.62	40	6 lbs
1	5.00	1.00	3.43	7.87	2.13	4.25	4	3.12	0.62	70	8 lbs
1 1/2	6.50	1.50	4.13	9.84	2.76	5.00	4	3.88	0.62	240	15 lbs
2	7.00	2.00	4.53	10.43	3.07	6.00	4	4.75	0.75	400	20 lbs
2 1/2	7.50	2.56	6.22	15.35	3.08	7.00	4	5.50	0.75	700	36 lbs
3	8.00	3.00	6.54	15.35	3.74	7.50	4	6.00	0.75	980	45 lbs
4	9.00	4.00	7.20	15.35	4.47	9.00	8	7.50	0.75	1700	75 lbs
6	15.50	6.00	11.22	38.98	7.62	11.00	8	9.50	0.88	5000	135 lbs
8	18.00	7.87	11.58	38.98	8.35	13.50	8	11.75	0.88	10000	290 lbs

ANSI CLASS 300# dimensions and weights

SIZE	A	B	C	D	E	F	N	S	T	Cv	WEIGHT
1/2	5.50	0.591	2.60	6.50	2.44	3.75	4	2.62	0.62	15	5 lbs
3/4	6.00	0.787	2.91	6.50	2.72	4.62	4	3.25	0.75	40	7 lbs
1	6.50	0.984	3.43	7.87	2.91	4.88	4	3.50	0.75	70	10 lbs
1 1/2	7.50	1.496	4.23	9.84	3.27	6.12	4	4.50	0.88	230	19 lbs
2	8.50	1.969	4.53	10.43	3.94	6.50	8	5.00	0.75	390	33 lbs
2 1/2	9.50	2.559	6.22	15.35	4.18	7.50	8	5.88	0.88	690	50 lbs
3	11.12	2.992	6.54	15.35	5.57	8.25	8	6.62	0.88	970	68 lbs
4	12.00	3.996	7.20	15.35	5.96	10.00	8	7.88	0.88	1680	96 lbs
6	15.88	5.984	11.22	38.98	7.60	12.50	12	10.62	0.88	4950	230 lbs
8	19.75	7.874	12.72	38.98	9.33	15.00	12	13.00	1.00	9950	430 lbs

NOTE: Dimensions are in inches

Mikron Valve Division will be more than happy to work with you on designing a valve to suit your needs. Valves can range from 150# - 2500# and larger if needed. Mikron Valve Division can build in a variety of materials, from 316 SST, Carbon Steel, to more exotic materials. Consult factory for your material needs.



**3" 900# FULL PORT, A479 TYPE 316 STAINLESS STEEL, SOCKET WELD ENDS,
WITH METAL SEATS, CLASS VI SHUT OFF**

THE VALVE CONSISTED OF THE FOLLOWING COMPONENTS:

1 piece: 316 sst ball w/hard chrome plating

1 piece: guide seat, stellite 6B ®

1 piece: seat seal, stellite 6B ®

1 piece: body, A479 type 316l

2 pieces: end connection, A479 type 316

1 pieces: body gasket, 316 sst/graphoil filled

1 piece: stem, 17-4ph

1 piece: stem packing, graphoil

4 pieces: Belleville washers, 301 sst

1 piece: thrust washer, stellite 6B ®

1 piece: compression ring, 316 sst

8 pieces: heavy hex head nuts, A194 Gr 8M

8 pieces: stud, A193. Gr. B8M

2 pieces: o rings

Operating conditions: 450 DEG. F., 2000 PSIG

13:00



1" 600# FULL PORT, CARBON STEEL, RING TYPE JOINT WITH METAL SEATS, CLASS VI SHUT OFF

THE VALVE CONSISTED OF THE FOLLOWING COMPONENTS:

1 piece: 316 sst, ball w/ hard chrome plating

1 piece: guide seat ring, stellite 6B[®]

1 piece: seal seat ring, stellite 6B[®]

1 piece: seat seal, reinforced graphite

1 piece: body, ASTM A105

1 piece: end connection, ASTM A105

1 piece: body gasket, 316 sst graphoil filled

1 piece: stem, 17-4 ph

4 pieces: stem packing, graphoil

4 pieces: studs, A193 Gr. B7

4 pieces: heavy hex head nuts, A194 Gr. 2H

1 piece: gland ring, 316 sst

2 pieces: washer, 301 sst

2 pieces: jam nuts, 304 sst



1/4" 900# FULL PORT, STAINLESS STEEL, THREADED ENDS WITH METAL SEATS, CLASS VI SHUT OFF

THE VALVE CONSISTED OF THE FOLLOWING COMPONENTS:

1 piece: T-port ball, 316 sst w/ hard chrome plating

3 pieces: seat ring, stellite 6B ®

3 pieces: seat seal, graphite

1 piece: body, A479 type 316

3 pieces: tail piece, A479 type 316 sst, flash chrome on threads

3 pieces: body gasket, 316 sst/ graphoil filled

1 piece: stem, inconel 600

3 pieces: stem packing, graphoil

4 pieces: Belleville washers, 301 sst

1 piece: thrust washer, nitronic 60

1 piece: compression ring, 316 sst

2 pieces: jam nut, 304 sst

1 piece: bonnet, A479 type 316

1 piece: bonnet gasket, 316 sst graphoil filled

4 pieces: socket head screws, A193 Gr. B8M

Operating conditions: FUEL VAPOR, 932 DEG. F., 10 PSIG